

**CARPET FOR R.G. FLOOR
WITH CONNECTION VELCRO STRIPS****6656A****KEEP THIS
DOCUMENT****Warning:**

This equipment should be installed by a qualified individual.

This apparatus should be used by only one person at a time, supervised by a qualified individual and with appropriate landing mats or a landing pit.

Using this equipment for purposes other than those originally intended is not allowed.

Compliance:

This equipment complies with the requirements of the European standard EN 913 "Gymnastic equipment - General safety requirements and test methods".

This equipment is FIG approved (only the carpet or with the wooden floor Ref. 6665A).

Recommendations:

As shown in French Standard NF S52-400 the following is recommended:

- keep these instructions for subsequent reference (inspection, maintenance, etc.).
- periodically carry out predictive maintenance.
- depending on how much it is used, have the equipment serviced yearly or every few years.

Packaging:

Carpet (Ref. 6655A) : Total volume : 2 m³ - Total weight : 362 kg.

- 4 carpet rolls:

-> 3 rolls of 4m width (Unit weight: 100 kg - Dim.: ø0,35 x 4,60m - Volume: 0,56 m³)

-> 1 roll of 2m width (Unit weight: 62 kg - Dim.: ø0,35 x 2,60m - Volume: 0,32 m³)

- 42m of Male Velcro (3 strips of 14m)

- 100m of adhesive marking tape (4 x 13m = 52m used).

Dismantling and storage :

- Vacuum carefully the carpet.

- **Carefully remove the junctions with the velcro connection strips.**

- The fitted carpets must be rolled up inside, with carpet side inside.

- Always store the equipment away from humidity and heat.

Maintenance:

It's advised :

- to vacuum the carpet once a week;

- **to shampoo the carpet once a year AT MOST.** Be careful, the junctions of different carpet parts have to be aired, before using the exercise floor again. To get rid of all dampness, remove the "velcro" connection strips, then turn the carpet lengths of 14m over on 50cm.

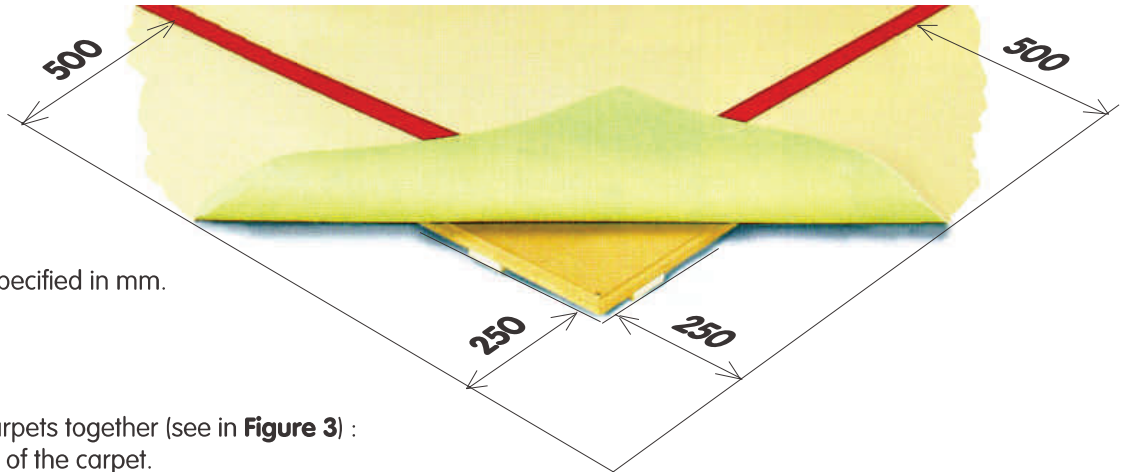
Important:

- If a problem is detected or suspected, do not use the equipment as long as it has not been checked by a technician.
- Any damaged or distorted piece should be replaced as soon as possible.

I. Assembly of the fitted carpet breadths :

- Unroll the four fitted carpet breadths in the same direction and to let them rest well flat during twenty-four hours.
 - The fitted carpet exceeds floor (réf.: 6665A) of **250 mm**.
 - Adjust the first breadth (**Figure 1**).
 - Position the other breadths free edge to edge (**Figure 2**).
- (To move a breadth, just get a person on both sides breadth, to raise all alternatively while maintaining tended, in order to make penetrate air under the breadth and to readjust by traction).
- Caution :** if you notice a difference in colour between the breadths, just turn the breadth concerned to put the fitted carpet in the same direction of the hair.

Figure 1



Dimensions are specified in mm.

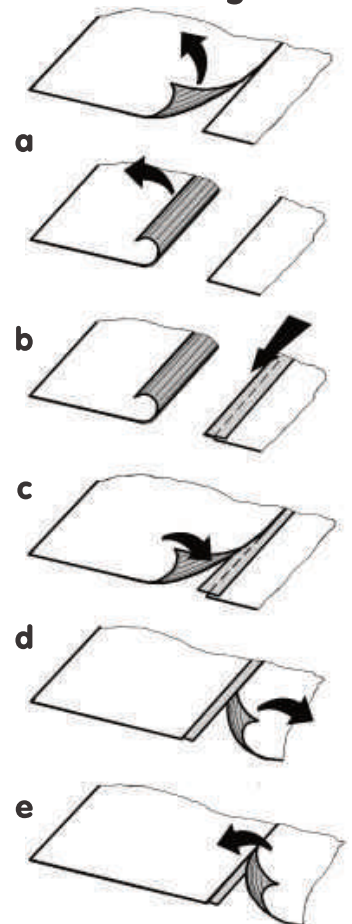
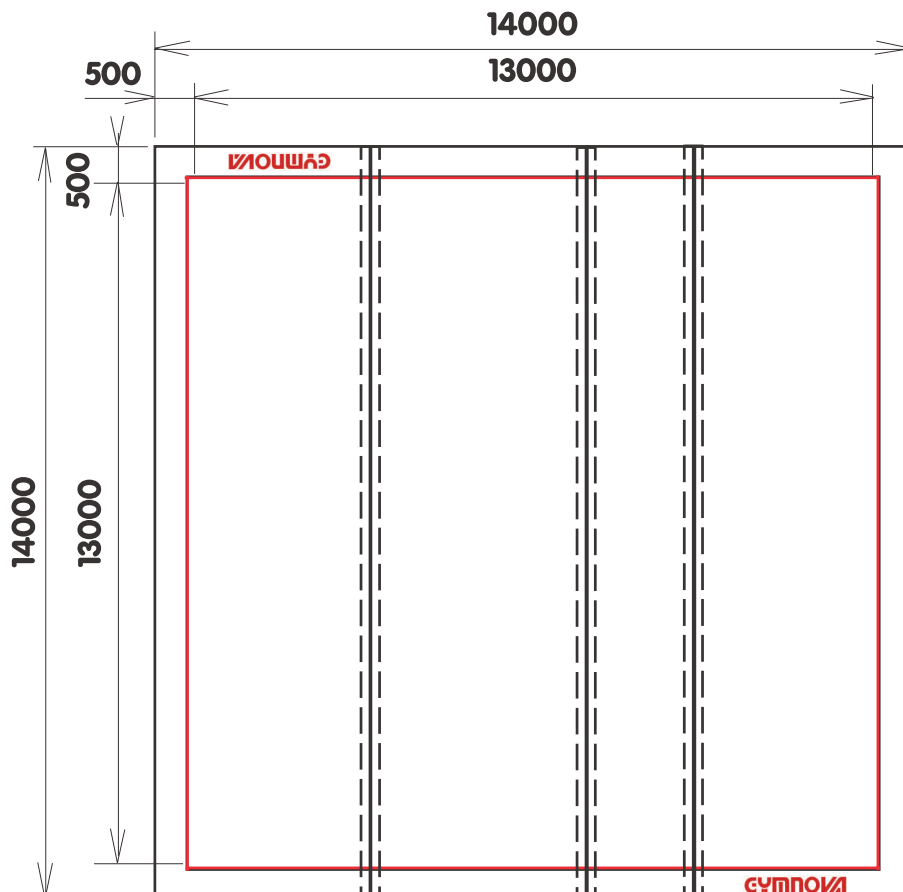
- Assemble the carpets together (see in **Figure 3**) :
 - Turn an edge of the carpet.
 - Unroll a velcro strip 10cm width, centre it on the selvage of the carpet let on the floor.
 - Carefully fold the carpet strip back on the velcro strip starting from the middle part.
 - Lift the other carpet strip (which is under the velcro).
 - Put it down on the velcro connection strip.

II. Installation of the delimitation : 13,00 x 13,00m outside markings.

- Unroll the adhesive band, without tending excessively, to 500mm of the edge of the fitted carpet on the four sides.
- Smooth the adhesive without drawing above, while going above for example, to obtain a better result.

Figure 3

Figure 2

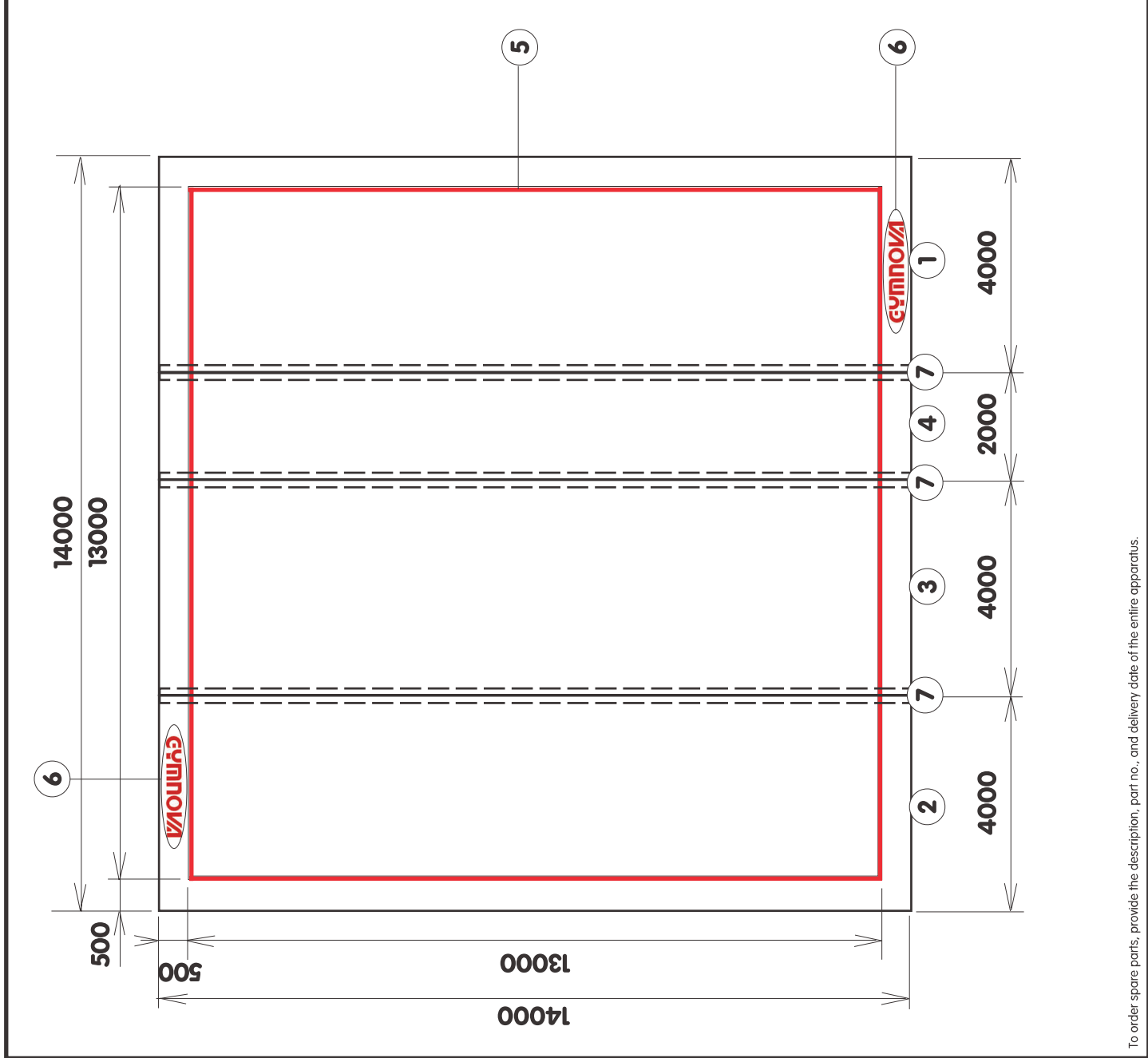


REP	NBR	DESIGNATION	REFERENCE	OBSERVATION
30	-			
29	-			
28	-			
27	-			
26	-			
25	-			
24	-			
23	-			
22	-			
21	-			
20	-			
19	-			
18	-			
17	-			
16	-			
15	-			
14	-			
13	-			
12	-			
11	-			
10	-			
9	-			
8	-			
7	-	100mm Male beige Velcro	TCR100BE	3 x 14m
6	-	R.G. GYMNOVA logo	6655/30	Spare Kit
5	2	50mm Red adhesive band	QATF0050RG	50 m roll
4	1	2m Central breadth carpet	6655/04	2 x 14 m
3	1	4m Central breadth carpet	6655/03	4 x 14 m
2	1	Left breadth of carpet	6655/02	4 x 14 m
1	1	Right breadth of carpet	6655/01	4 x 14 m

GYMNOVA
 RUE GASTON DE FLOTTE
 13012 MARSEILLE
 Tél. : 33-(0)-4-91-87-51-20
 Fax : 33-(0)-4-91-93-86-89

**CARPET FOR R.G. FLOOR
 WITH CONNECTION VELCRO STRIPS**

PAR : J. BRIOT | **NM144a** | LE : 20/05/08 | Ref.: **6656A**
 THIS DOCUMENT IS THE PROPERTY OF GYMNOVA. IT IS CONFIDENTIAL AND SHALL NOT BE REPRODUCED WITHOUT PRIOR AUTHORIZATION.



To order spare parts, provide the description, part no., and delivery date of the entire apparatus.