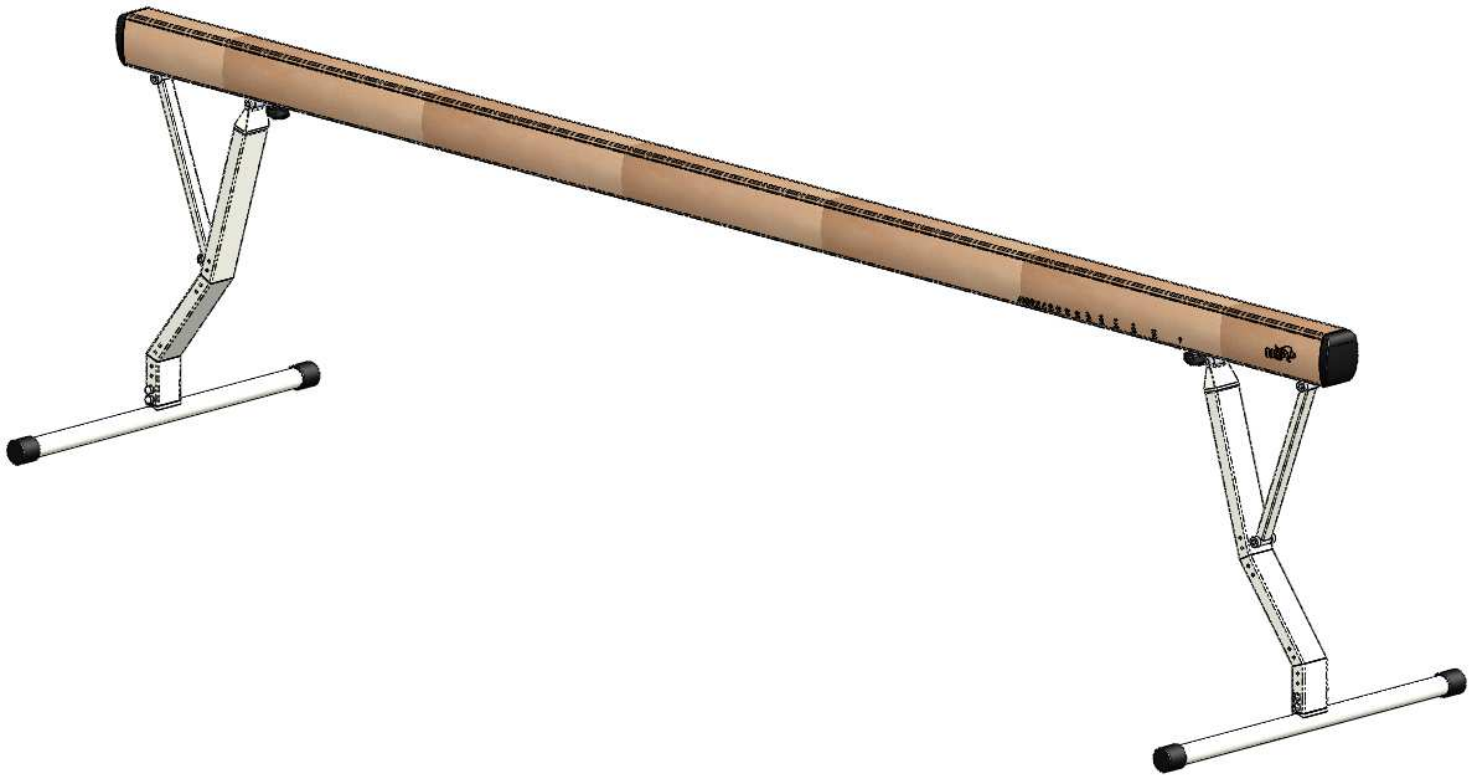


(UK) Assembly Instructions



Thank you for buying this product O'jump. We advise you to read the assembly instructions carefully. The apparatus is presented in pre-assembled parts for a simplified assembly. We have designed this O'jump product to bring you complete satisfaction. If you need help, the O'jump team is at your disposal to accompany you.

 +33 (0)4 91 87 51 20
 +33 (0)4 91 93 86 89
 info@ojump.com

www.ojump.com



Warning:

This equipment must only be used by one person at a time and under the supervision of a qualified individual, with appropriate landing mats.
Using this equipment for purposes other than those originally intended is prohibited.

Recommendations:

- keep these instructions for subsequent reference (inspection, maintenance, etc.).
- periodically carry out predictive maintenance.
- depending on how much it is used, have the equipment serviced yearly or every few years.

Footprint and weight:

- Apparatus 500x100 cm
- 101Kg



Tools needed to assemble the apparatus.



Allen wrench N°10, 8, 5



Hex wrench N°18/19



Hardware listing (pre-assembled)

A



X4

M12 x 120

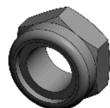
B



X8

Ø24x13

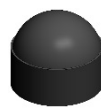
C



X4

M12

D



X4

End cap M12

E



X2

Circlips

F



X2

M10 x 45

G



X4

M5 x 16

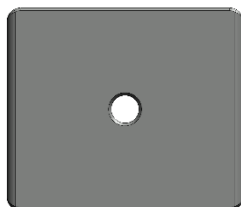
H



X2

Indexing knob

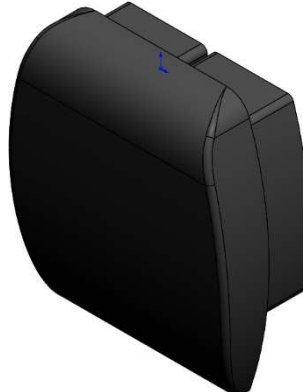
I



X2

Inner clamping plate

J

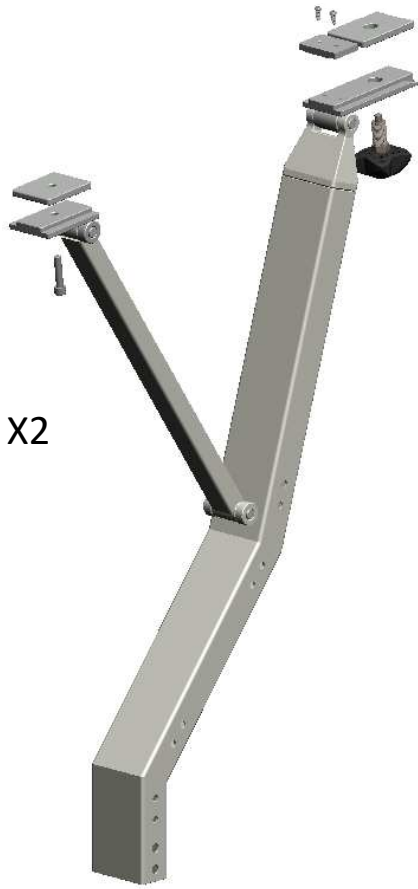


X2

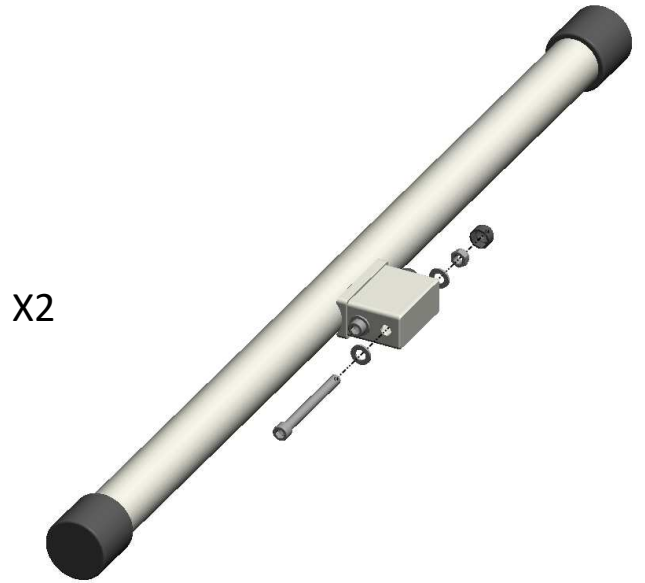
Beam end caps



List of parts (pre-assembled)

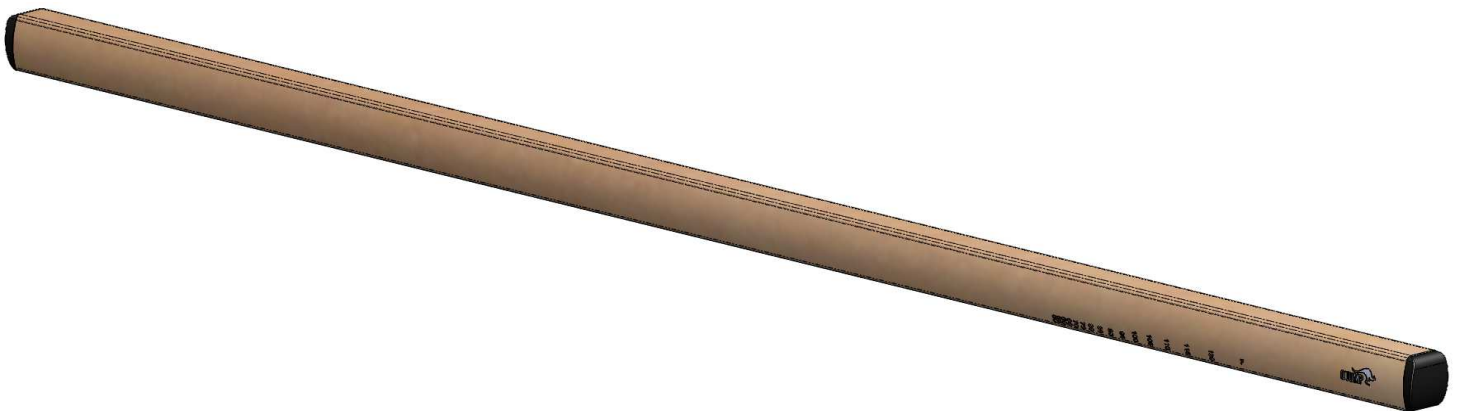


Legs



Feet

1 Feet + 1 Leg (2 packages)



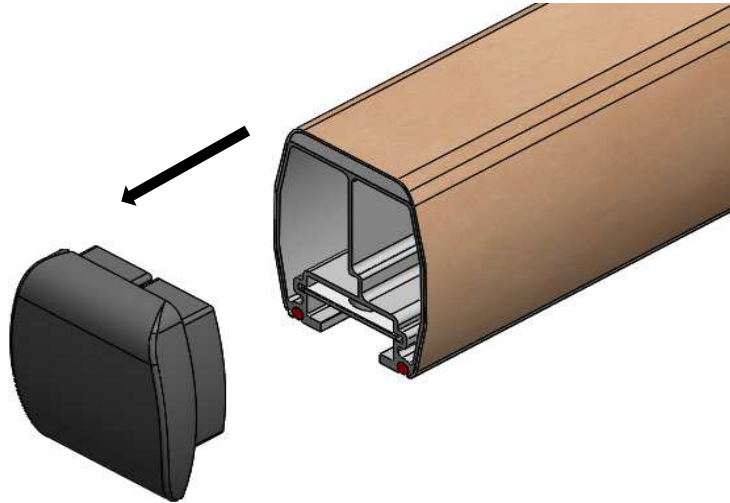
1 Beam body (1 package)



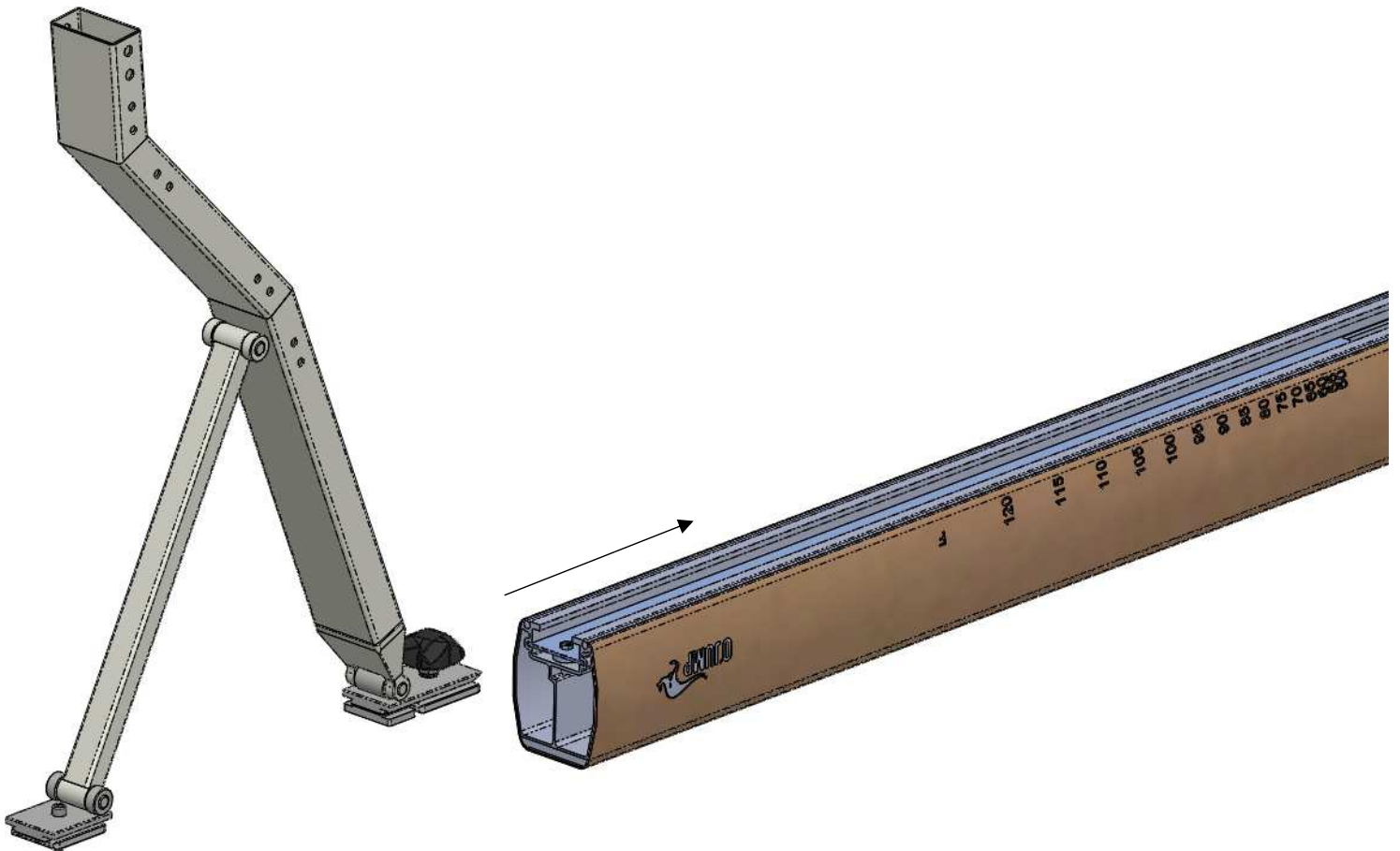
Assembling Legs

1) Remove the end caps.

J



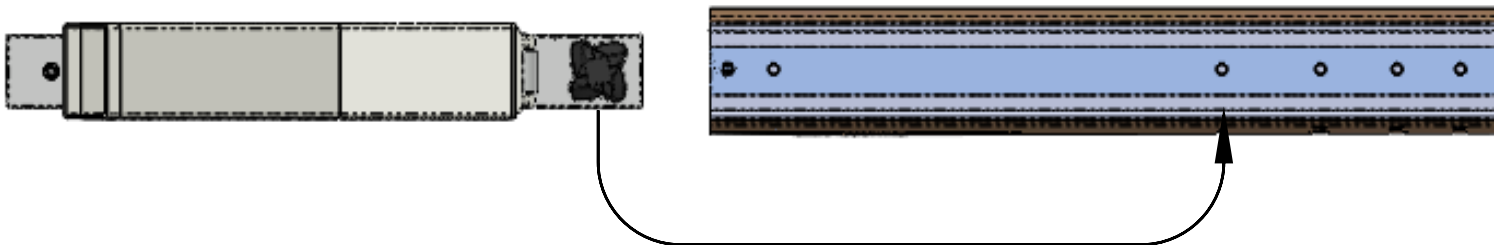
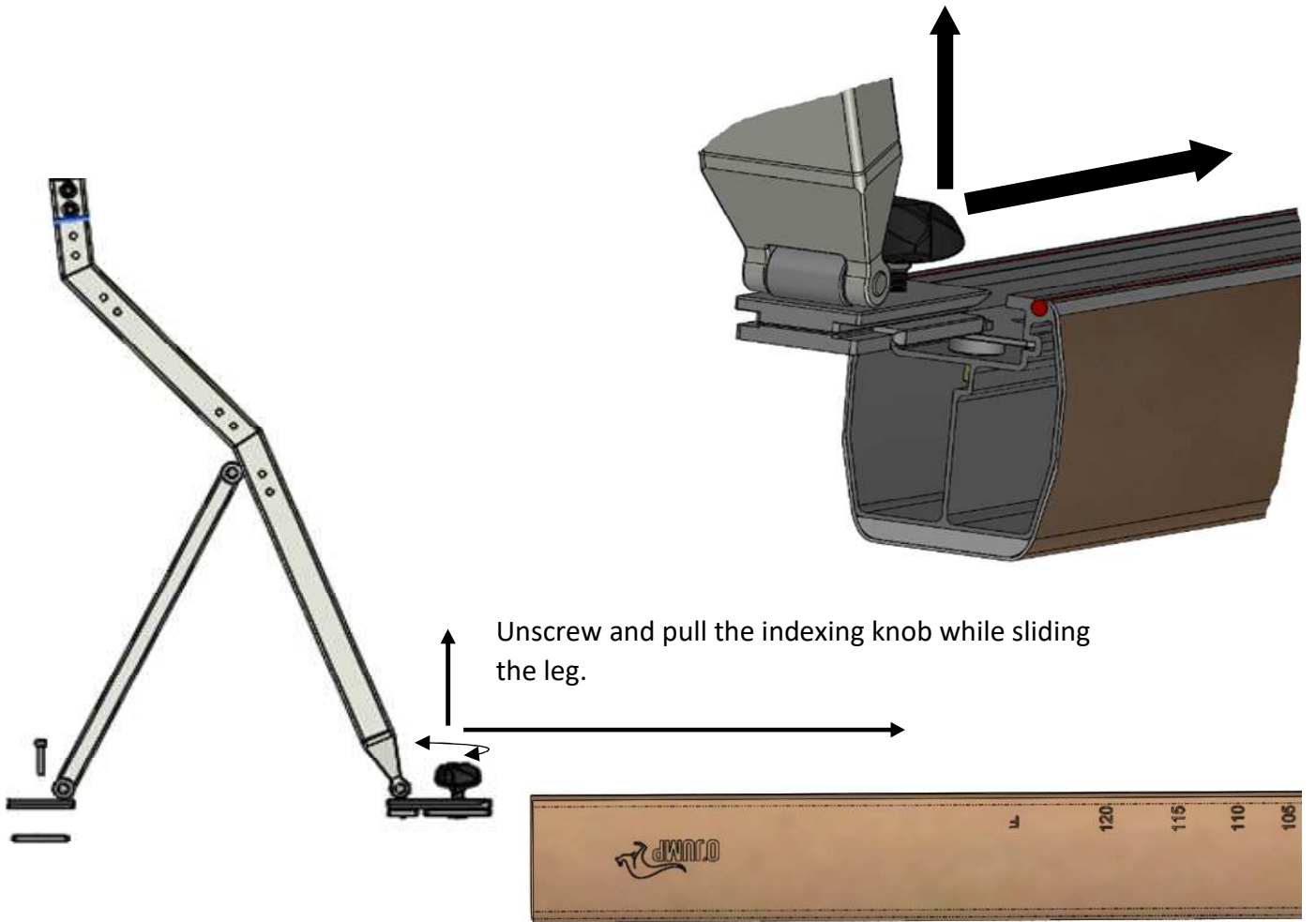
2) Place the beam body upside down on the floor and put in place the leg.





Allen wrench N°8

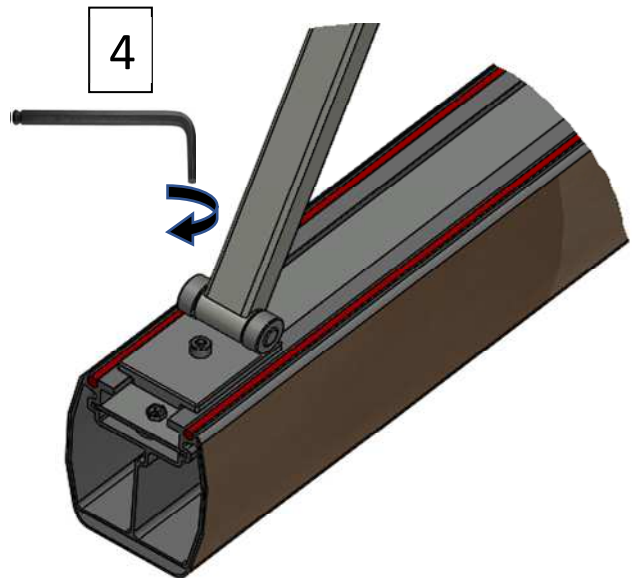
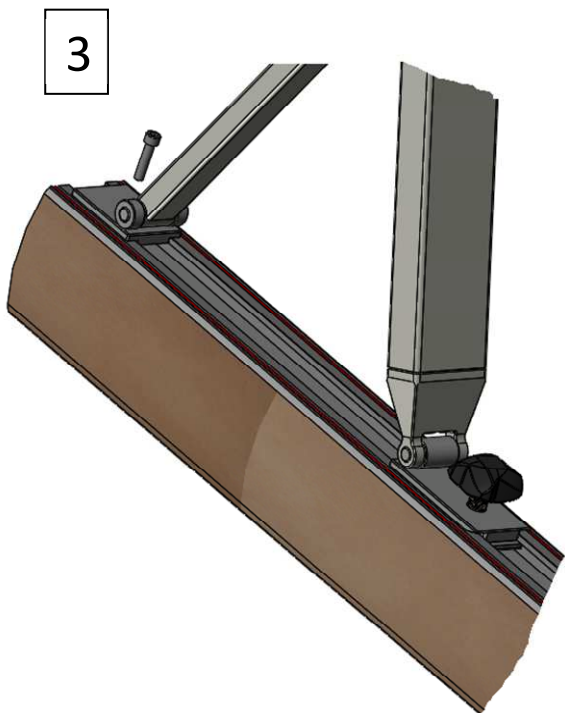
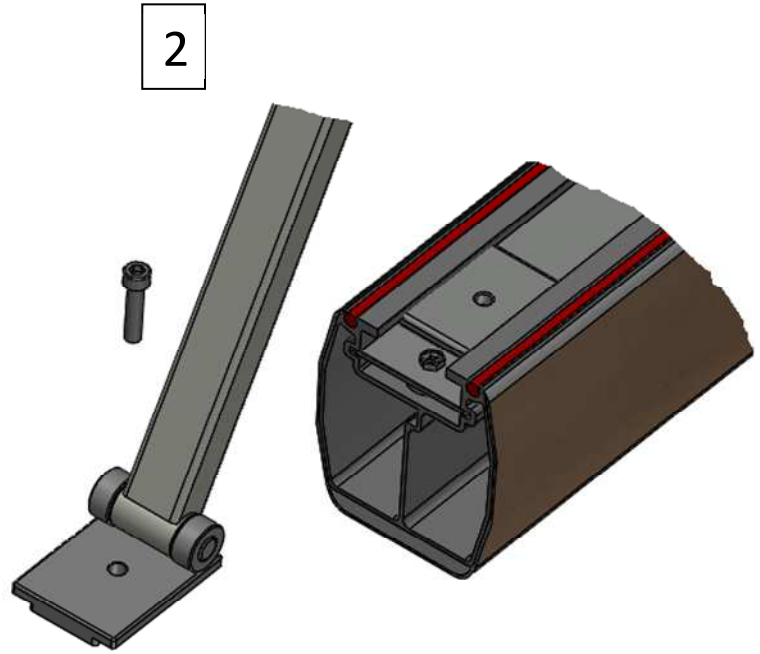
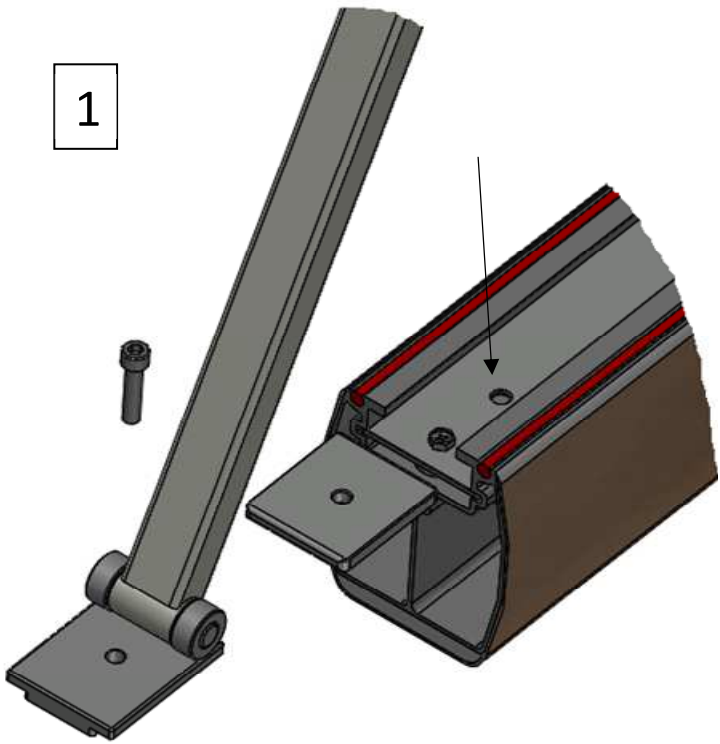
3) Inserting the indexing knob into the beam body



Put in place the knob in front the F Position then release to insert the indexing pin.



4) Inserting of the inner clamping plate in the beam body



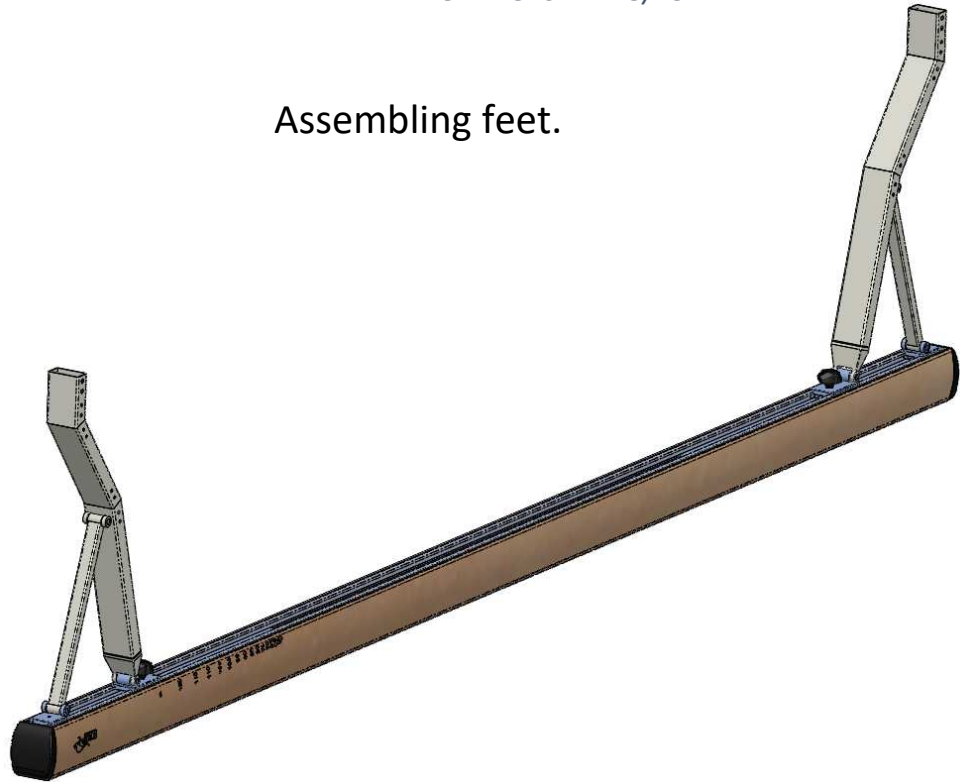


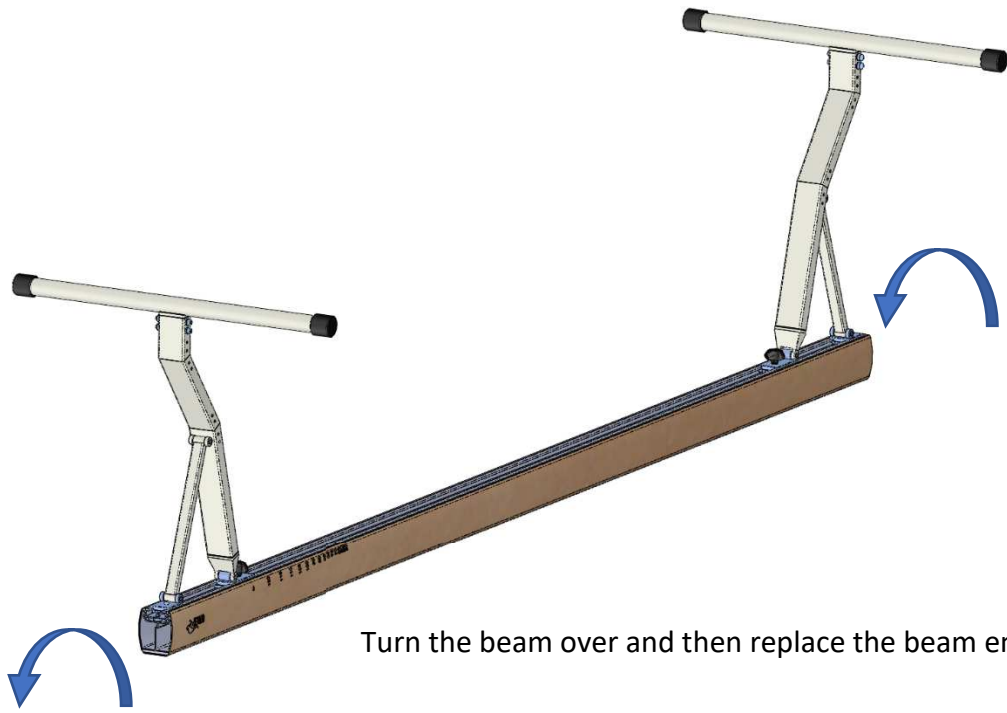
Allen wrench N°10



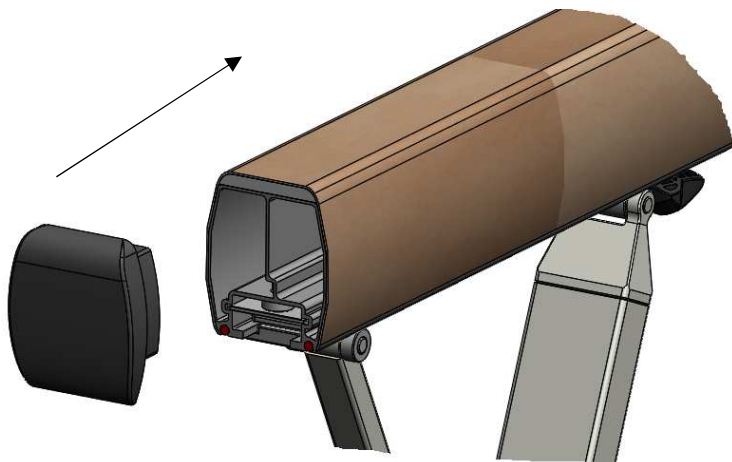
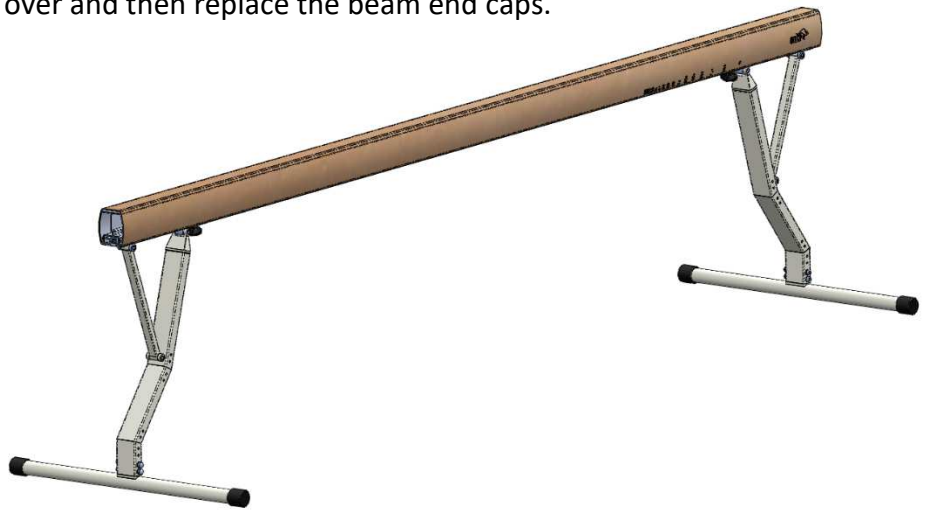
Hex wrench N°18/19

Assembling feet.



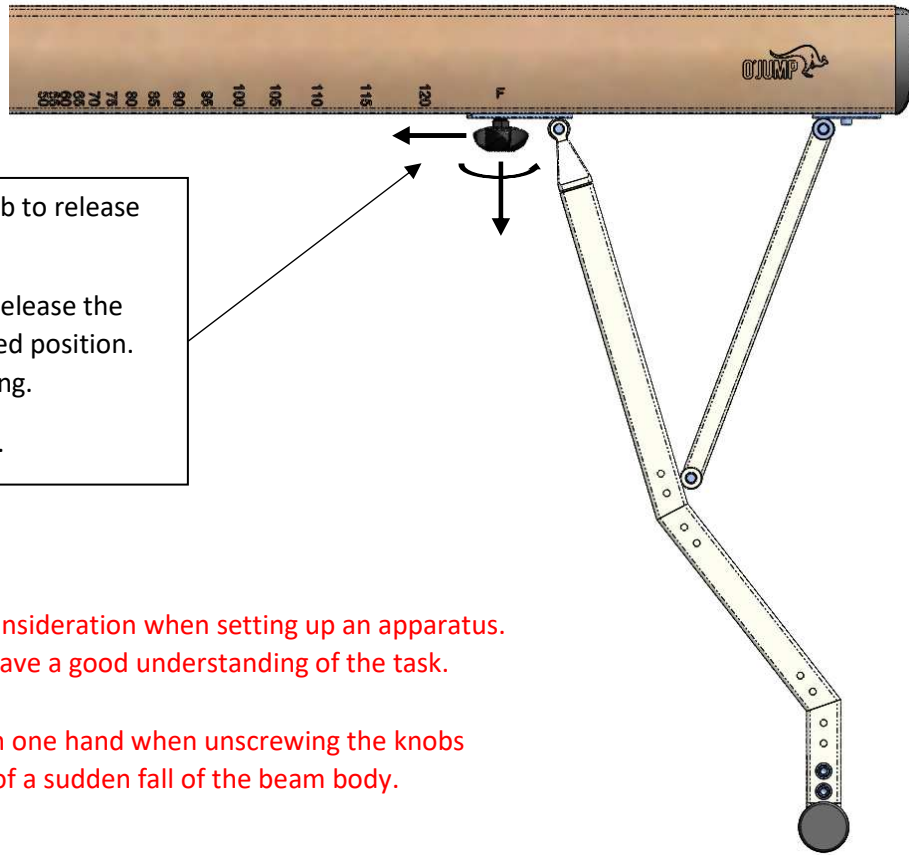


Turn the beam over and then replace the beam end caps.





Height adjustment



Unscrew and pull the knob to release the indexing pin.

Slide the foot sideways. Release the knob in front of the desired position. Lock the knob by tightening.

Repeat for the other foot.

Warning:

Safety is always the main consideration when setting up an apparatus.

- It is important to always have a good understanding of the task.
- Use common sense.
- Always hold the beam with one hand when unscrewing the knobs
- Risk of injury in the event of a sudden fall of the beam body.

