

## «LONDON» RHYTHMIC GYMNASTICS EXERCISE FLOOR REF. 6667



**GYMNOVA**  
SUPPORTEUR OFFICIEL

*This FIG-approved competition exercise floor was used at the Kiev World Championships in Ukraine (2013), at the Valencia World Championships (2023) and will feature the Paris Olympic Games (2024).*



- DYNAMISM
- COMFORT
- PERFORMANCE
- FIG APPROVED

Used in major Rhythmic Gymnastics competitions, this exercise floor offers gymnasts effective resilience thanks to its consistent gymnastics area. Its excellent vibratory impact absorption reduces strain injuries on wrists and ankles during sequences.

It is quick and easy to set up and the 13-metre peripheral markings provide a reassuring visual outline of the gymnastics area.

This exercise floor provides a safe, flat working surface ensuring the stability and accuracy of the exercises performed.

## ADVANTAGES

### PERFORMANCE

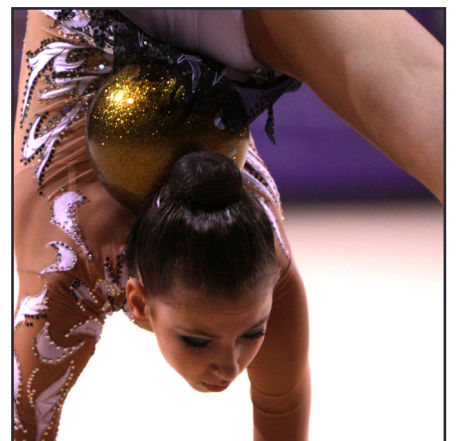
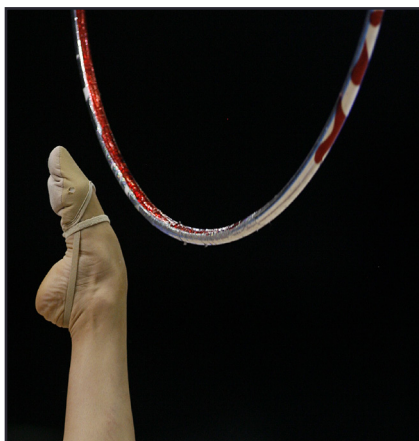
The exercise floor is designed with a consistent gymnastics area over its entire surface, providing highly efficient resilience to support successful execution of very challenging sequences.

### COMFORTABLE IN USE

The materials used in the production of this exercise floor, in particular for the carpet, provide optimum absorption of impacts in jumps and acrobatic movements. This helps to protect gymnasts' health by reducing risks of strain injuries on the wrists and ankles.

### EASY SET-UP

The exercise floor can be set up quickly and easily. The 13-metre peripheral markings also provide a clearer view of the gymnastics area for greater reassurance when practising.





# TECHNICAL SPECIFICATIONS

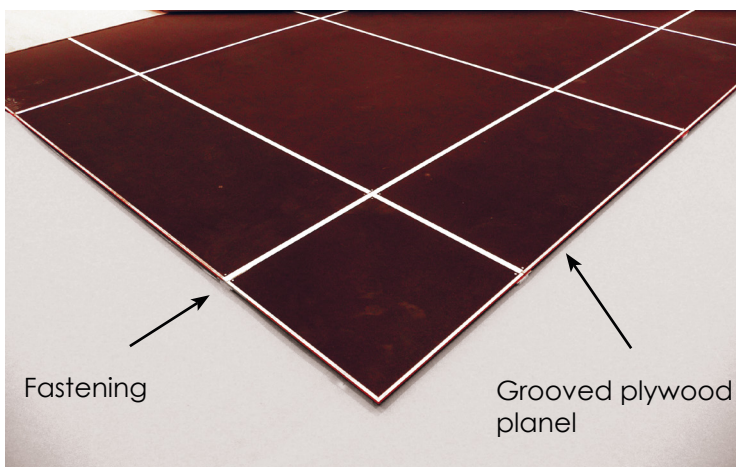
## LONDON Exercise floor

- F.I.G. approved
- Overall dimensions : 14 x 14 m
- Thickness : 46 mm
- Peripheral markings : 13 x 13 m



### R.G carpet - REF. 6655

- Dimensions = 14 x 14 m
- Made up of three 14 x 4 m widths and one 14 x 2 m width.
- 13 m performance area marked out with self-gripping strips.
- Edges are finished with whip stitching.



### R.G Floor - REF. 6665

- Dimensions = 13.50 x 13.50
- Thickness = 4 cm
- 12 mm thick plywood and 28 mm thick resilient foam.
- Panels assembled using fastening sections designed to ensure an even surface.

## ASSOCIATED PRODUCTS

### CARPET REEL TROLLEYS

REF. 6670 & 6672 & 6673



Ref. 6673

Dimensions: 4 m (Ref. 6670 & 6673) and 2 m (Ref. 6672).

- With omnidirectional transport wheels.
- Equipment required to roll a complete RG carpet:  
= 3 Ref. 6670 + 1 Ref. 6672 or 2 Ref. 6673.

### BALLET BARRE - REF. 2220

- Ref. 2220: Wooden ballet barre: 1.60 m
- Ref. 2217: Double bracket barre support
- Ref. 2216: Single bracket barre support
- Ref. 2215: Barre support without brackets



Ref. 2220

### WALL BARS - REF. 2315-2325-2335-2345-2355-2365-2370



Ref. 2345

- Ref. 2315 to 2365: Wall bars with 1 to 6 sections.
- Ref. 2370: Detachable wall bar protection (attaches to wall bar refs. 2315 to 2365).

**DOWNLOAD ASSEMBLY INSTRUCTIONS**

